



New Construction

PROGRESS UPDATE

July 2023

Southeast Pre K-12 School





PROJECT SUMMARY

Site Development & Landscaping

July 2023 Progress

- Site
- Utilities
 - Continue Site Lighting Conduit– 75%
 - Underground Power Conduit– 75%
 - Underground Data Conduit– 90%
 - Light Pole Bases Installation– 100%

Upcoming Progress

- Continue Installing Underground Electrical Utilities



PROJECT SUMMARY

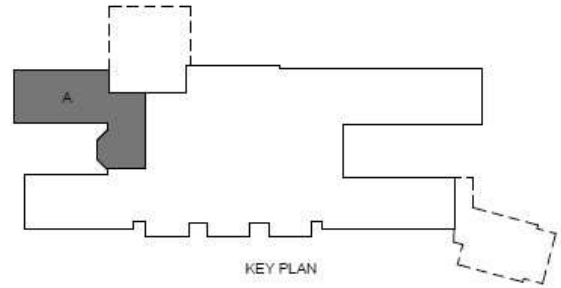
Area A

July 2023 Progress

- First Floor MEP Overhead Ongoing– 90%
- First Floor Overhead Sprinkler Mains– 100%
- Second Floor MEP Overhead Ongoing– 70%
- Second Floor Exterior Metal Framing– 85%
- Second Floor Interior Framing– 95%
- Set Hollow Metal Frames– 50%
- Roof Blocking– 90%
- Set Metal Deck– 90%
- Temp Roof Dry-in– 85%

Upcoming Progress

- Setting Hollow Metal Frames
- Second Floor MEP Overhead Rough-in
- Cavity Insulation and Brick Veneer



PROJECT SUMMARY

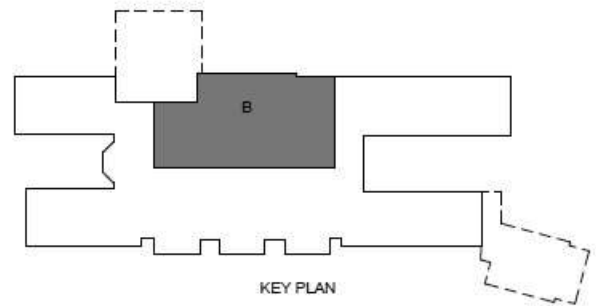
Area B

July 2023 Progress

- Foundations– 95%
- Below Grade CMU– 95%
- Branch Conduit– 95%
- Pour Partial Slab on Grade– 70%
- Structural Steel– 75%
- Bearing CMU– 80%
- Precast Planks– 95%

Upcoming Progress

- Continue Bearing CMU
- Continue Slab on Grade
- Continue Setting Steel
- Precast Plank Topping

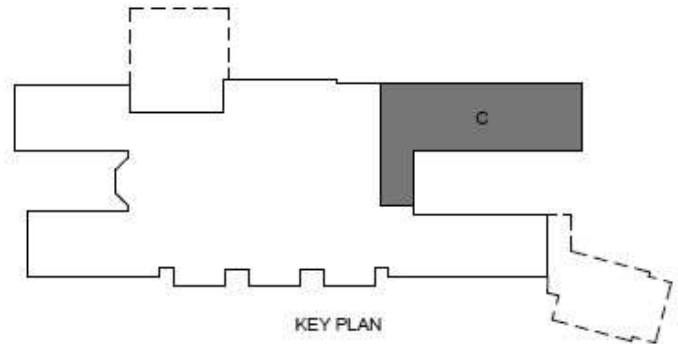


PROJECT SUMMARY

Area C

July 2023 Progress

- Second Floor CMU Bearing– 100%
- First Floor MEP Overhead Ongoing– 100%
- Set Trusses– 90%
- Set Metal Deck– 30%



Upcoming Progress

- Second Floor MEP Overhead Rough-in
- Second Floor Interior Metal Framing
- Metal Deck
- First Floor Overhead Sprinkler Mains



PROJECT SUMMARY

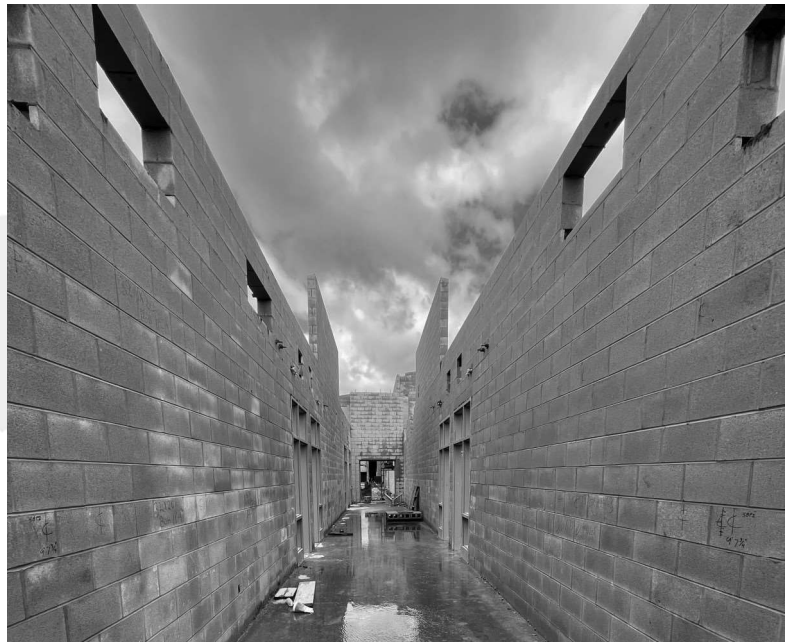
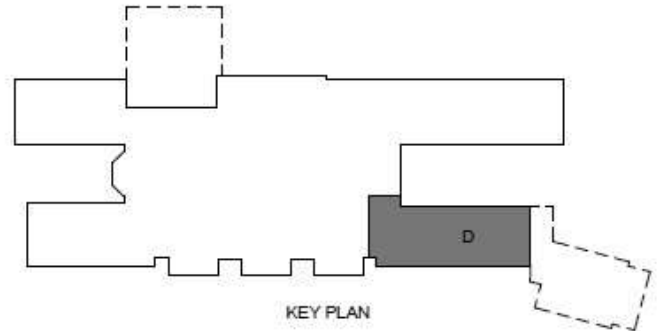
Area D

July 2023 Progress

- Exterior Bearing CMU – 40%

Upcoming Progress

- Exterior Bearing CMU
- MEP Rough – In



PROJECT SUMMARY

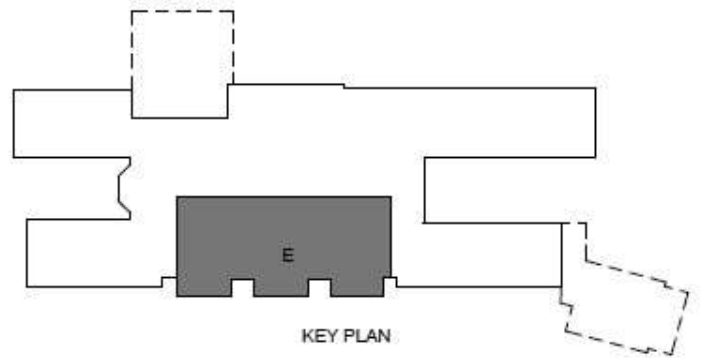
Area E

July 2023 Progress

- CMU to Bearing– 80%
- First Floor MEP Overhead Rough-in– 80%
- Set Structural Steel– 30%

Upcoming Progress

- Continue CMU to Bearing
- Continue Setting Structural Steel
- Slab on Grade Preparation
- Continue MEP Overhead Rough-in
- Precast Plank Topping



PROJECT SUMMARY

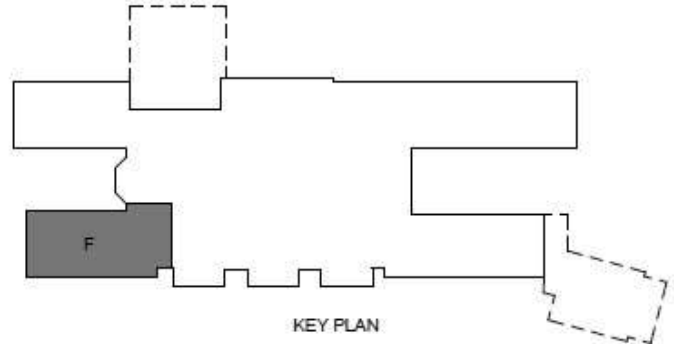
Area F

July 2023 Progress

- Wiring– 100%
- Temp Roof Dry-in– 90%
- Interior Metal Framing– 100%
- Roof Blocking– 90%
- Set Metal Deck– 95%
- Exterior Metal Framing– 20%
- Overhead Sprinkler Mains– 90%

Upcoming Progress

- Roof Blocking
- Continue Setting Metal Deck
- Exterior Metal Framing





PROJECT SUMMARY

Area G

July 2023 Progress

- Bearing CMU— 70%

Upcoming Progress

- CMU Bearing
- MEP Rough In
- Set Trusses

